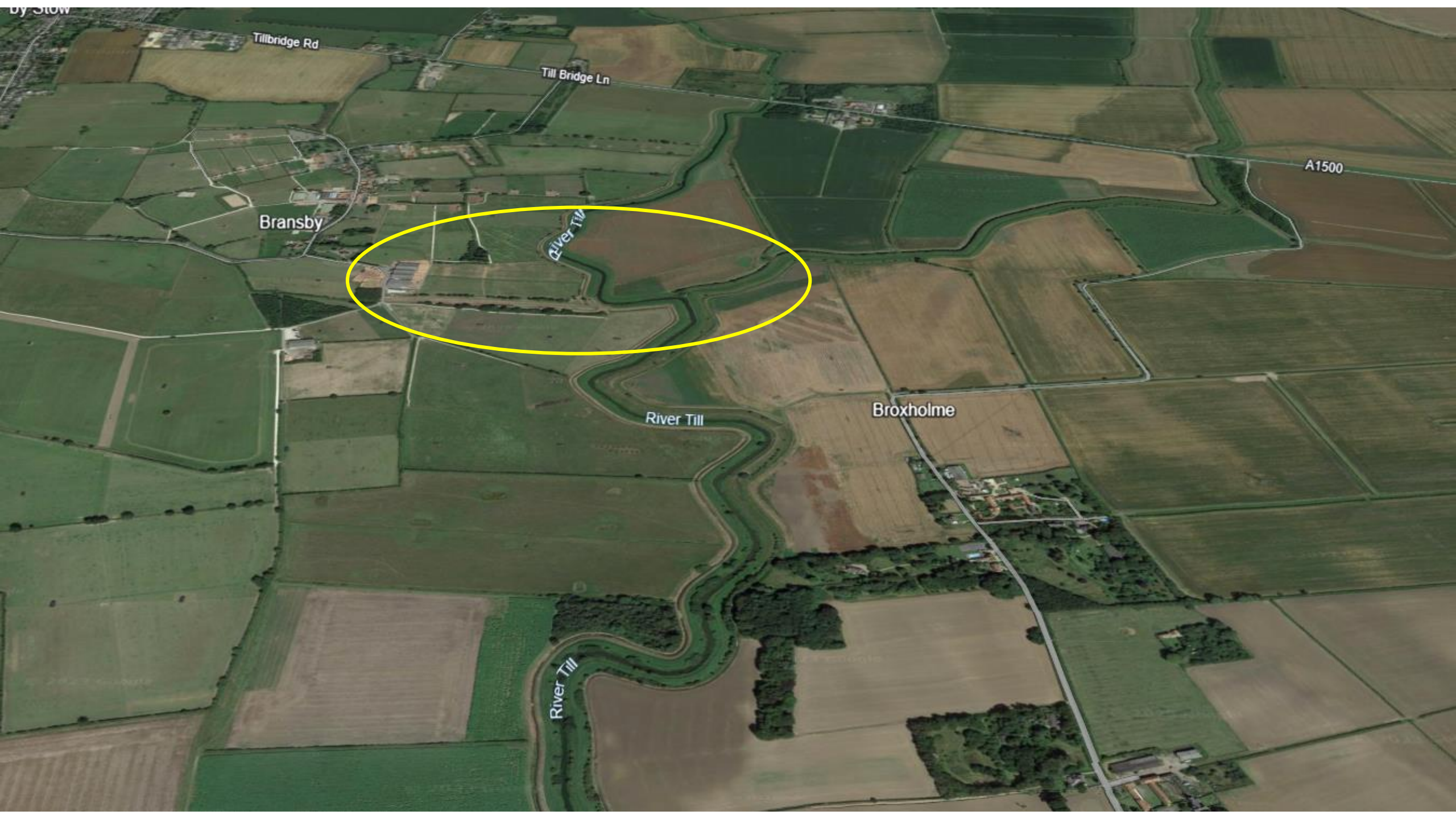


7000Acres Supplement to Flooding Concerns

- The following images demonstrate the extent of flooding following storm Babet (18-21 October 2023).
- Given the extent to which more extreme rainfall is anticipated, the rate at which this flows over the land must be considered.
- The creation of a significant area of tilted impermeable glass surface would concentrate and accelerate run-off, and would inevitably will exacerbate flooding impacts.

Drone photographs of flooded catchment areas of river Till on Sunday, 22 October 2023
from Odder to Springthorpe in permitted fly zone below 120 metres

Around areas of West Burton and Cottam proposed solar developments



Tillbridge Rd

Till Bridge Ln

A1500

Bransby

River Till

River Till

Broxholme

River Till











Coates

Stow Pasture

Thorpe in
the Fallows

Tillbridge Rd

Tillbridge Ln

Bransby

River Till

Broxholme







Coates

Stow Pasture

River Till





Stow Pasture

Coates

River Till

River Till

River Till





River Till

Coates

Stow Pasture

Field







